

INSTRUMENT APPROACH CHART - ICAO

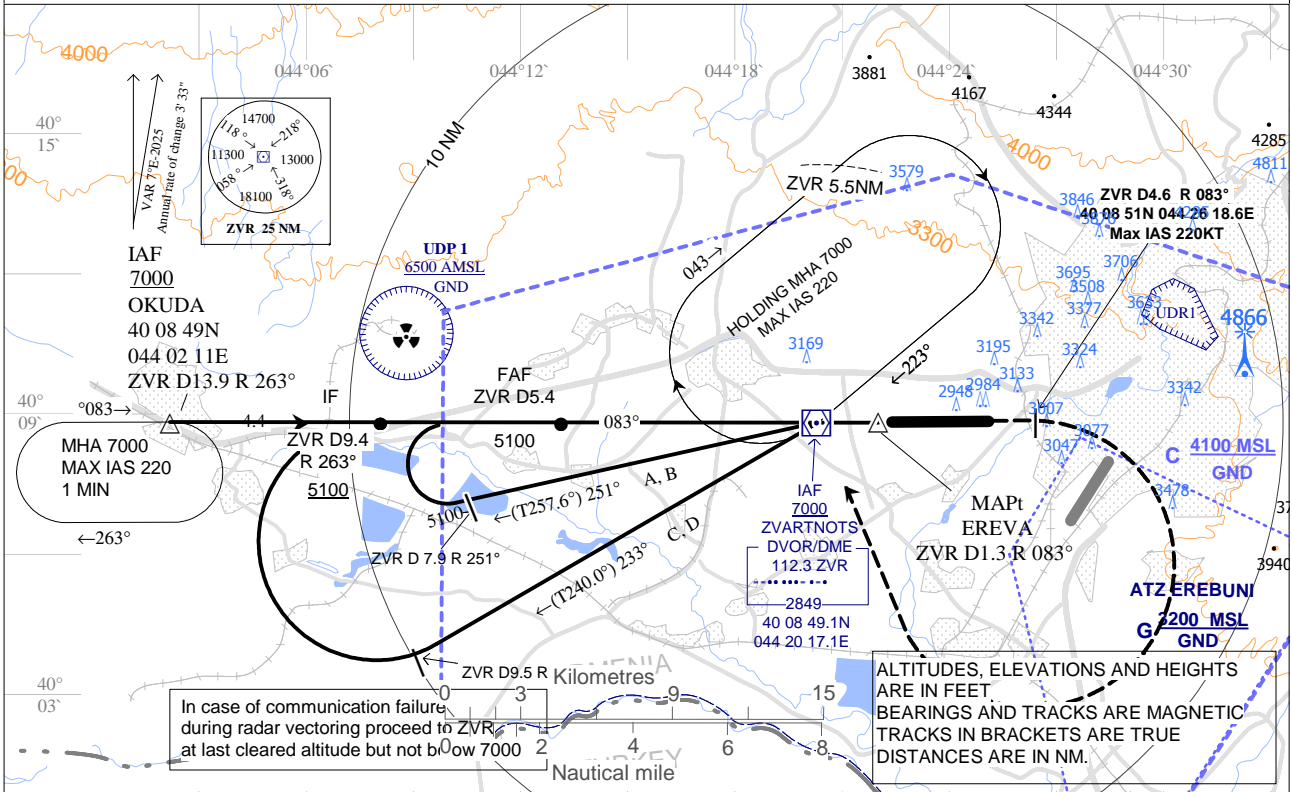
YEREVAN / Zvartnots

TRANSITION LEVEL By ATC
TRANSITION ALTITUDE 11500

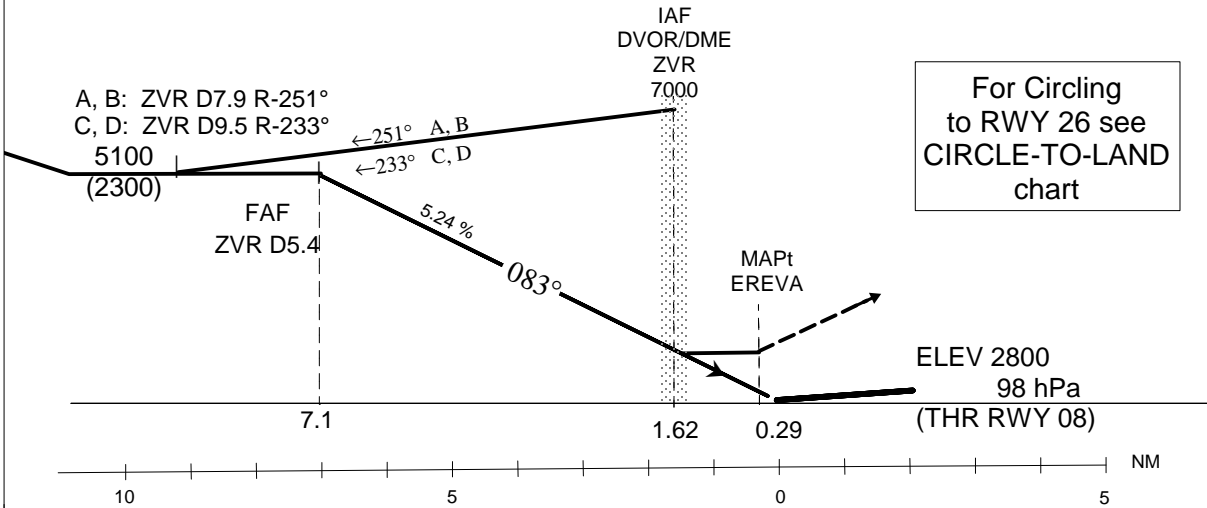
AD ELEV 2838
HEIGHTS RELATED TO
THR RWY 08 ELEV 2800

ATIS 119.5
YEREVAN / APP 126.0
YEREVAN / TWR 128.0
YEREVAN / GND 119.0

DVOR/DME
RWY 08



MISSED APCH - Climb straight ahead to ZVR D4.6 then turn right to ZVR climbing to 7000 and hold.



CHANGE: NEW HOLDING OKUDA, MSA corr.

Cat of ACFT	DVOR/DME	OCA/H				Final Approach Distance NM	ZVR DME 5	ZVR DME 3	ZVR DME 1
		A	B	C	D				
Straight-in Approach		3210 (410)				ALT (HGT)	4957 (2157)	4321 (1521)	3685 (885)

Ground Speed	kt	120	140	160	180	200
Rate of Descent (grad. 5.24 %)	ft/min	640	740	850	960	1060

MAPt - EREVA or ZVR D1.3NM R 083°